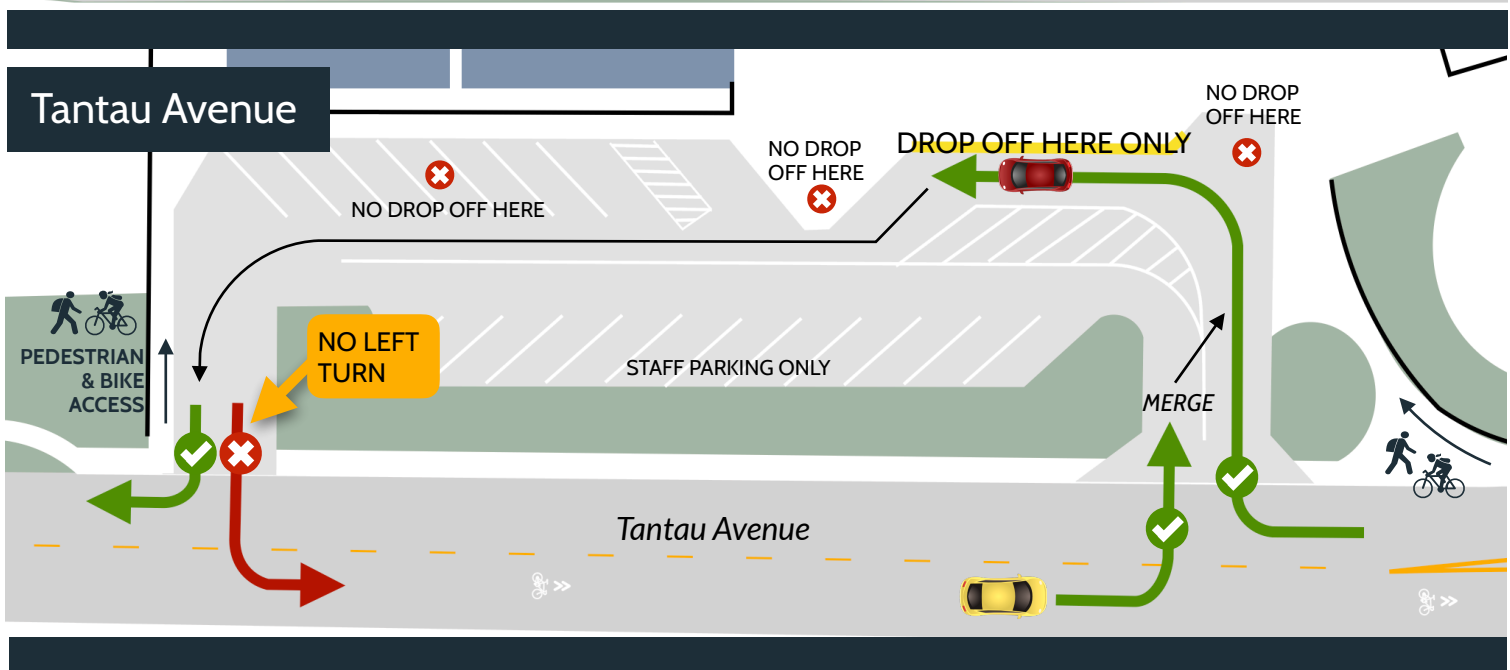
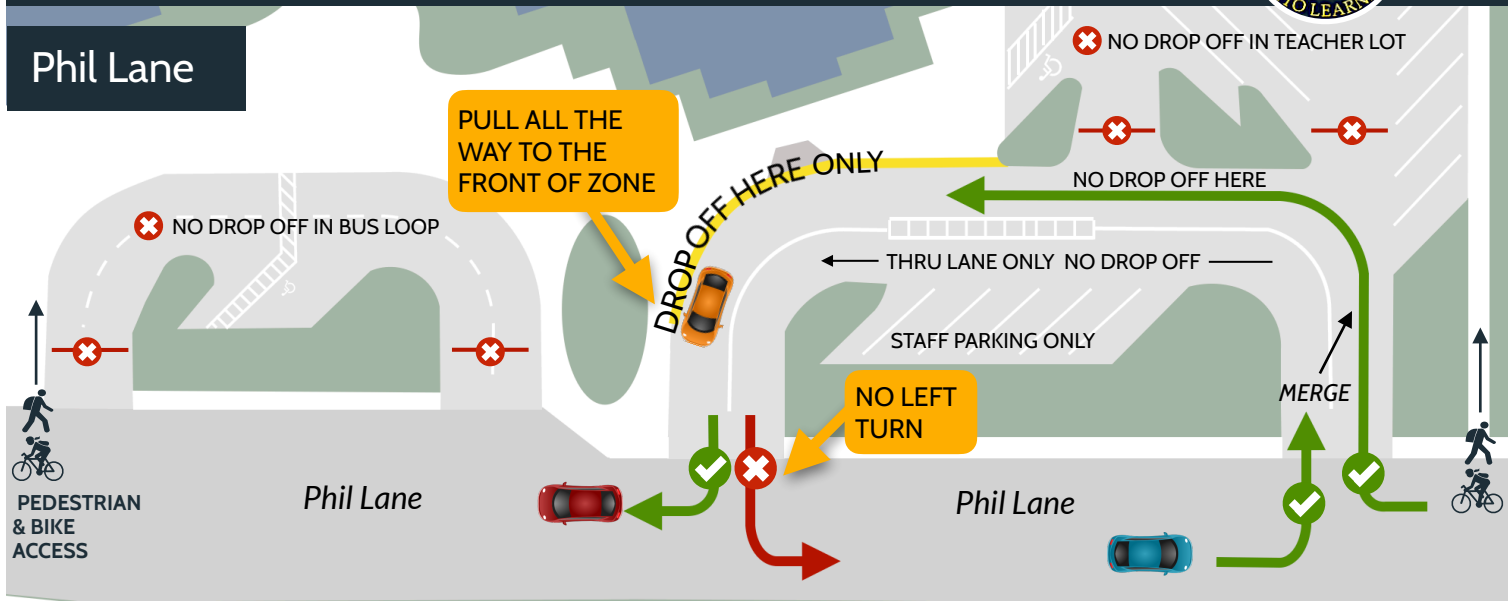


# SEDGWICK ELEMENTARY WALK, BIKE, AND DRIVE COMMUTING RULES



## YOU CAN

- Avoid the traffic jams near school
- Increase your child's school success
- Save money, time, and be more green



**HAVE YOUR CHILD  
WALK, BIKE, OR SCOOTER  
TO SEDGWICK!**

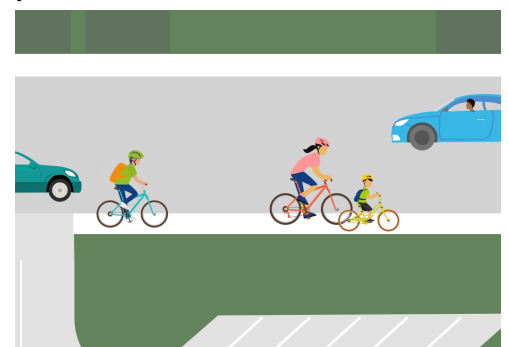


## WALK AND BIKE SAFELY TO SEDGWICK

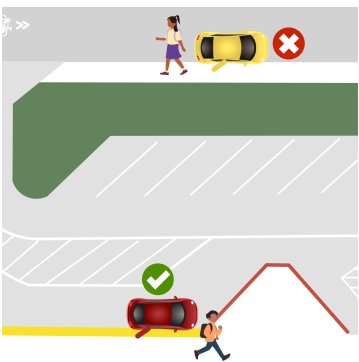
**ONLY CROSS AT CROSSWALKS.**  
Make eye contact with drivers  
before crossing.



Children in K-3rd grade should bike or scooter on the sidewalk (and their parents with them can, too!)



**Don't drop off or pick up  
your child on the street, on  
any side of the school.  
ALWAYS use the drop off  
lanes at Sedgwick.**



The diagram shows a road with a green area and a building labeled 'office'. A blue 'P' sign is correctly placed on the left side of the road, next to a green checkmark, indicating that parking is allowed there. A red car is parked in this area. A red 'R' sign is incorrectly placed on the right side of the road, next to a red 'X', indicating that parking is not allowed there. A green car is parked in this area. A pedestrian is walking on the sidewalk next to the 'R' sign.

A detailed map of the Sedgwick Elementary area. The map shows a grid of streets including Phil Ln., Stendhal, Shadygrove Dr., Barnhart Ave., Tantau Ave., Culbertson, Pendergast Ave., Tuggle Ave., Moretti Dr., Wunderlich Dr., and Finch. Sedgwick Elementary is located at the intersection of Phil Ln. and Shadygrove Dr. A crossing guard is shown at the intersection of Phil Ln. and Barnhart Ave. A green dashed line indicates a 'Great biking route to Sedgwick!' running along Barnhart Ave. and Tuggle Ave. A red car icon with the text 'Park & walk from here' is shown on Barnhart Ave. near Culbertson. Several callout boxes provide additional information: 'HEAVY TRAFFIC ON FINCH AVE.' with a warning icon; 'HEAVY TRAFFIC ON TANTAU AVE. USE BRET AVE. OR JUDY AVE. IF POSSIBLE.' with a warning icon; 'THE BEST PLACE TO CROSS IS AT TANTAU AVE. AND BARNHART AVE. WITH THE CROSSING GUARD!'; and 'A GREAT WAY TO AVOID TRAFFIC IF DRIVING IS TO PARK A BLOCK AWAY & WALK IN!'. Green checkmarks are placed at various intersections along the biking route.

In California, it is illegal to use a cell phone in your hand while driving, even for texting or navigation!



CUPERTINO  
SAFE ROUTES  
TO SCHOOL



**CUPERTINO**  
**VISION ZERO**  
www.cupertino.gov/visionzero



Sedgwick  
Elementary  
School

## Walk Bike Cupertino



[walkbikecupertino.org](http://walkbikecupertino.org)