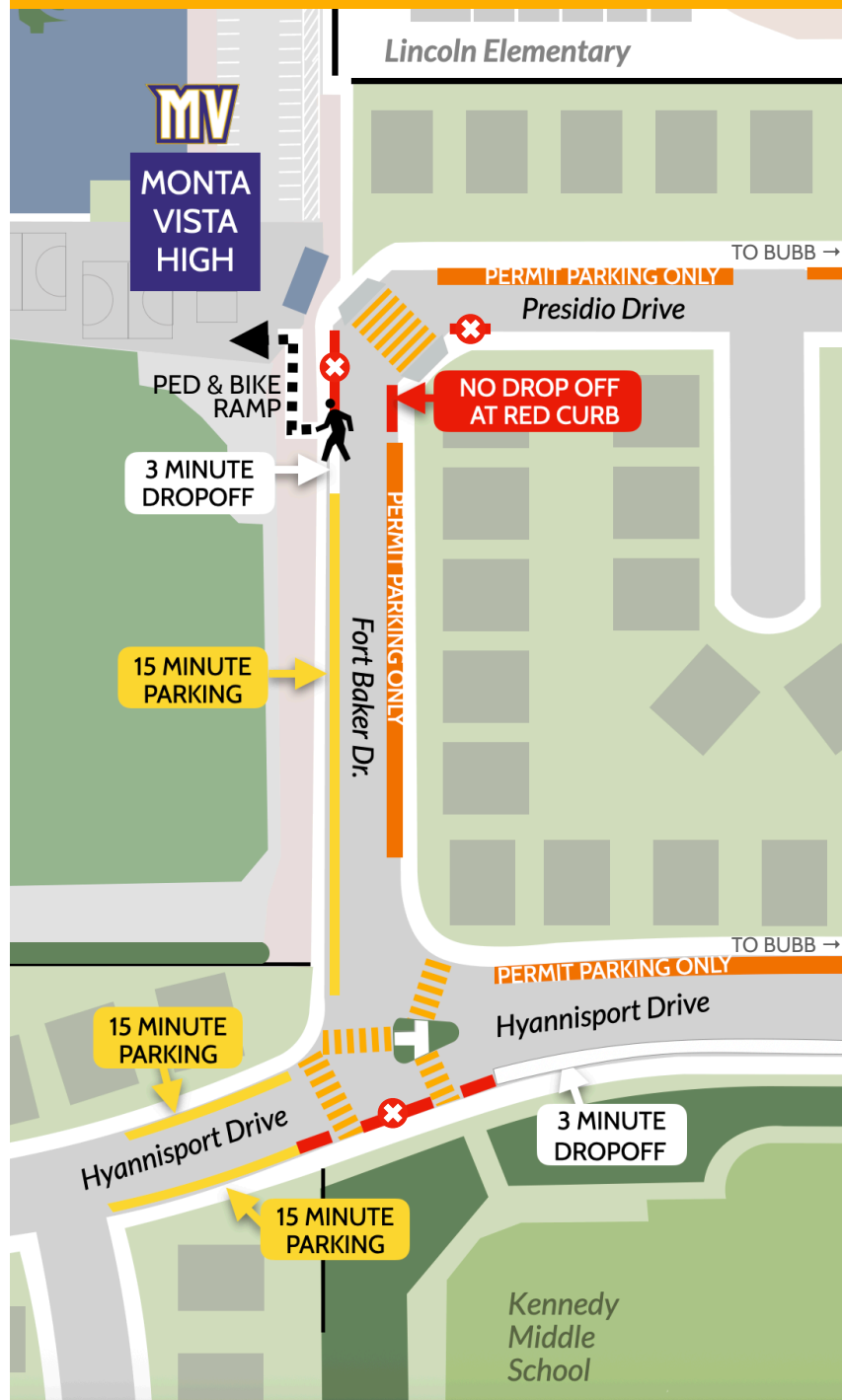


- Avoid the traffic jams near school
- Increase your child's school success
- Save money, time and be more green

**HAVE YOUR CHILD WALK, BIKE, OR  
SCOOTER TO SCHOOL!**  
(Or park a few blocks away.)



## Back of School Drop off/Pickup



## BIKES, SCOOTERS, E-BIKES, SKATEBOARDS

PARK YOUR RIDE AT A RACK BEHIND THE WEIGHT ROOM OR NEAR BUILDINGS A & B.  
DON'T RIDE YOUR BIKE ON CAMPUS.



IF YOU BIKE TO SCHOOL EVERYDAY FOR...

1 WEEK YOU SAVE THE EQUIVALENT CO<sub>2</sub> TO PLANTING 2½ MATURE TREES

1 SEMESTER YOU SAVE THE EQUIVALENT CO<sub>2</sub> TO PLANTING 47 MATURE TREES!



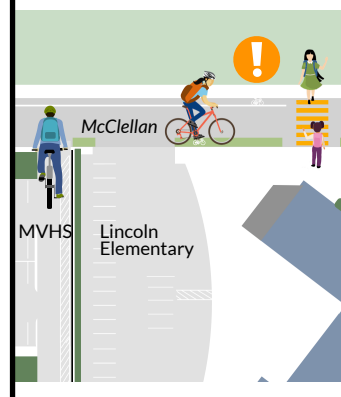
If you plan to arrive at school 15-20 minutes early, you will experience the least congestion.

## KEEP OUR STUDENTS SAFE

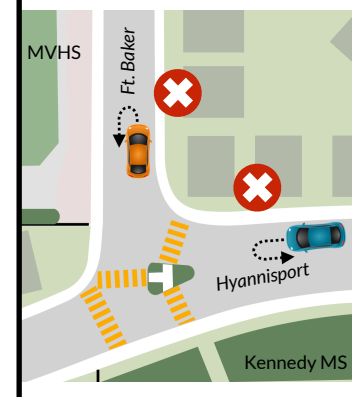
Drivers and cyclists must watch for students in crosswalks, especially at McClellan and Byrne/Orange.



Drivers and cyclists must carefully watch for students in the crosswalk in front of Lincoln Elementary.



Do not U-turn at any location near the school, including in back-of-school drop off areas.



THESE  
RULES ARE  
BROUGHT TO  
YOU BY

