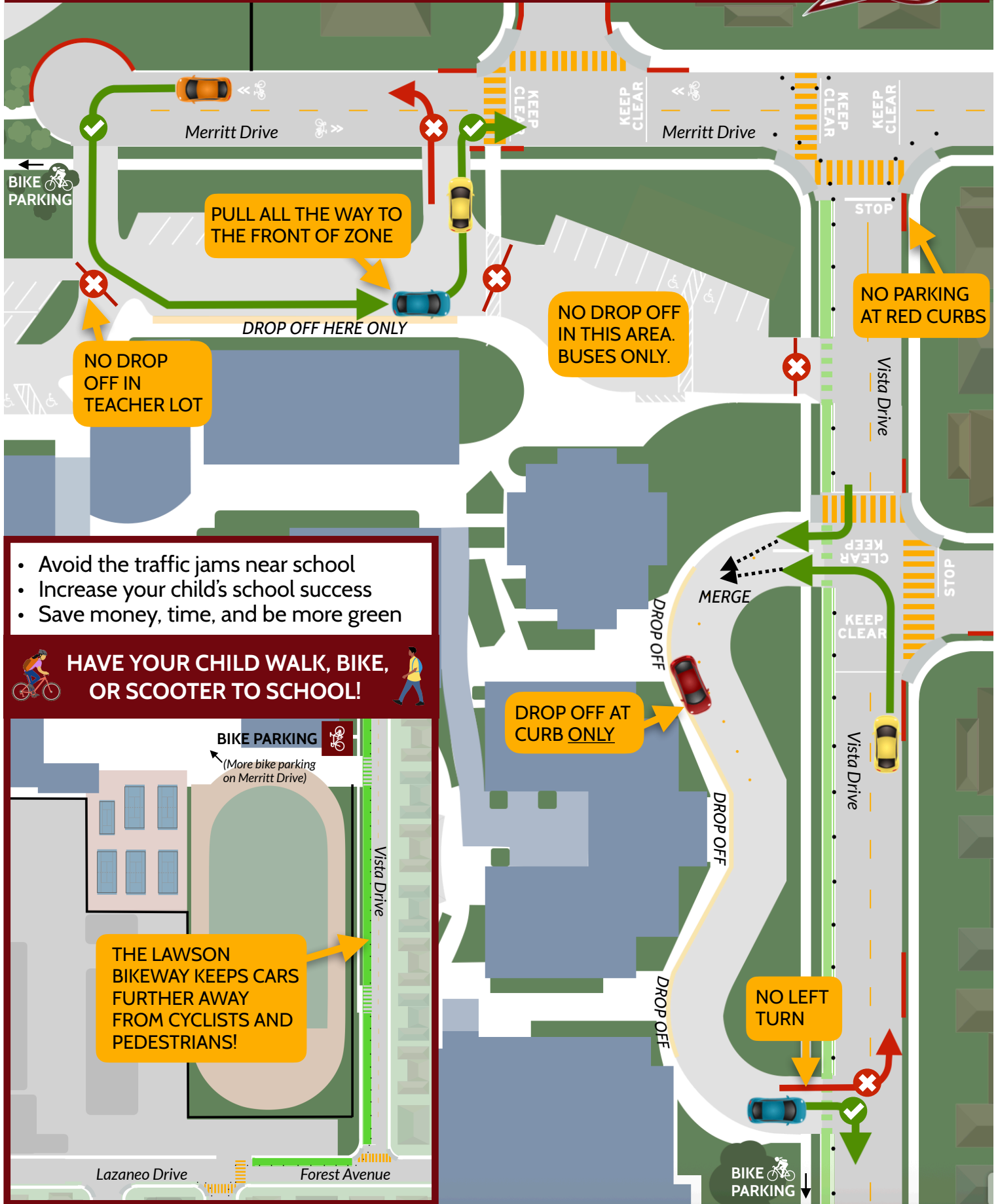
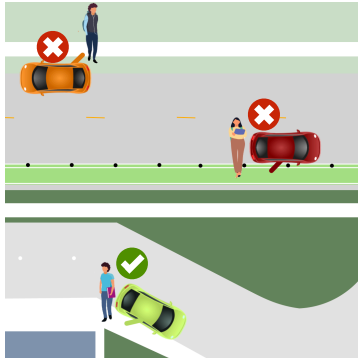


# LAWSON MIDDLE WALK, BIKE, AND DRIVE COMMUTING RULES

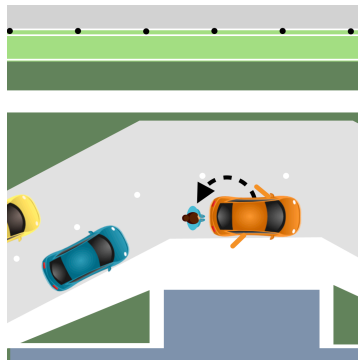


## HOW TO DROP OFF YOUR CHILD AT LAWSON

**Don't drop off or pick up your child on the street,** including against bike lanes. **ALWAYS** use the drop off lanes at the school.



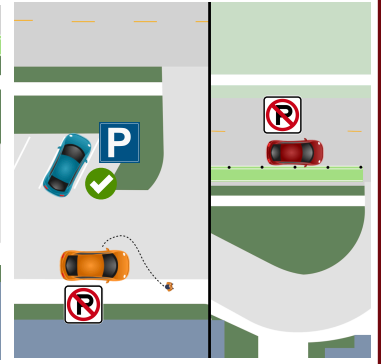
**Be ready to drop off.** Drivers should not get out of the car. Backpacks should not be in the trunk for retrieval in the line.



**Move your car forward in the dropoff lane** when the car ahead of you moves—don't drop off as soon as you enter campus.

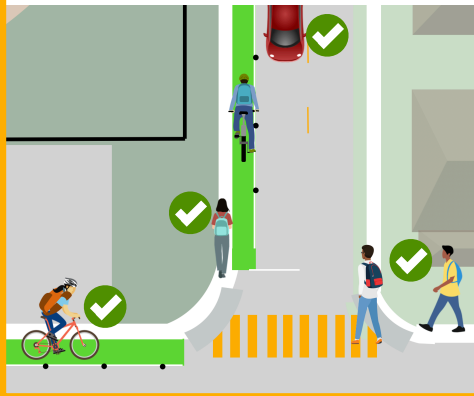


**Park only in designated parking spaces.** Do not park against the bike lane. Never leave your car unattended in line.

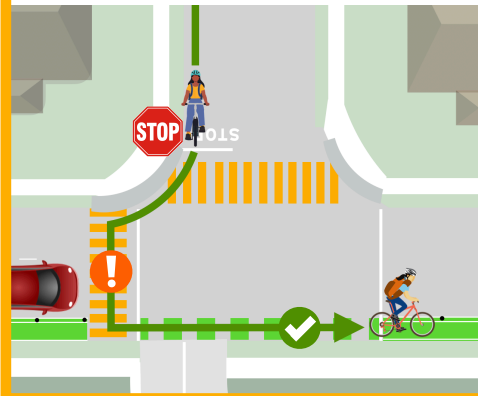


## WALK AND BIKE SAFELY TO LAWSON

Cyclists should use the bikeway, pedestrians should use the sidewalk. The street should be for cars.



Use the crosswalks to enter and exit the bikeway safely. Stop at all stop signs and watch for cars.

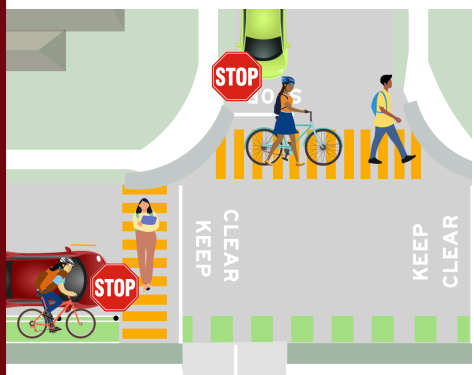


The bikeway goes in both directions! Use it to get to bike parking safely from any direction.

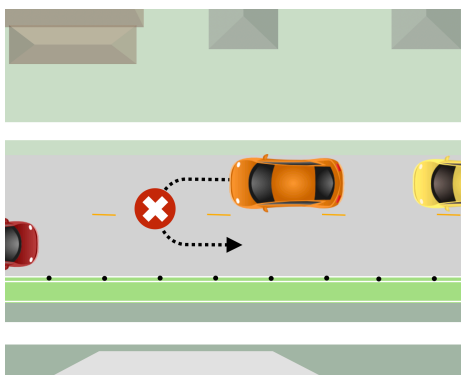


## AVOID A TICKET AND KEEP OUR KIDS SAFE!

Cars and bikes must stop for anyone in a crosswalk. Anyone in the crosswalk always has right-of-way.



Don't make any U-turns when cars or any students are in sight, or when near Lawson.



## DON'T BE A DISTRACTED DRIVER!

In California, it is illegal to use a cell phone in your hand while driving, even for texting or navigation!



THESE RULES ARE BROUGHT TO YOU BY:

CUPERTINO  
SAFE ROUTES  
TO SCHOOL

CUPERTINO  
VISION ZERO  
www.cupertino.gov/visionzero

