



PUBLIC WORKS

CITY HALL
10300 TORRE AVENUE • CUPERTINO, CA 95014-3255
TELEPHONE: (408) 777-3403 • FAX: (408) 777-3366
CUPERTINO.GOV

CITY COUNCIL INFORMATIONAL MEMORANDUM

Date: January 30, 2026

To: Cupertino City Council

From: Chad Mosley, Director of Public Works

Re: Photovoltaic Systems Design and Installation (PV) Project, Design Update

Background

The Capital Improvement Program (CIP) Photovoltaic Systems Design and Installation (PV) Project was approved by the City Council as part of the Fiscal Year (FY) 24-25 annual budget. On December 3, 2024, the conceptual design for three sites - Community Hall, Cupertino Sports Center, and Quinlan Community Center – was approved. At the February 4, 2025, Council meeting, the Design Build Entity (DBE) contract for the PV project was awarded to Syserco Energy Solutions, Inc. (SES). The staff reports and minutes from those meetings are available online via the City's website. <https://cupertino.legistar.com/Calendar.aspx>

The conceptual design approved by Council in December 2024 included a conceptual layout at all three sites. The layouts at Community Hall and Cupertino Sports Center remain unchanged as the project enters construction.

The conceptual design approved at Quinlan Community Center included PV panels on the roof of QCC, a carport in the Alves parking lot and shade structures above the Memorial Park central picnic area. When the DBE contract was awarded, the conceptual design in that area had been revised to include only a carport in the Alves parking lot and shade structures above the Memorial Park central picnic area, accepting a suggestion from SES to reduce costs.

The schematic design of the project was initiated after execution of the DBE contract. Syserco submitted options for the shade structures above the Memorial Park central picnic area. The aesthetic designs and the costs for the system over the picnic area were not acceptable. Two of the options received are pictured below (see Figure 1 and 2).

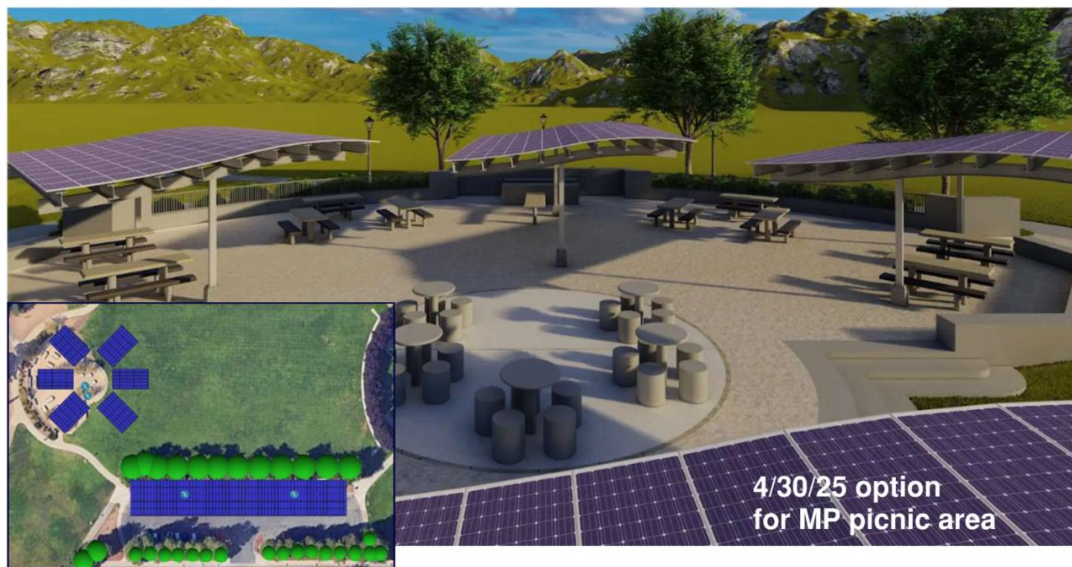


Figure 1: April 2025 option, Plan and 3D illustration

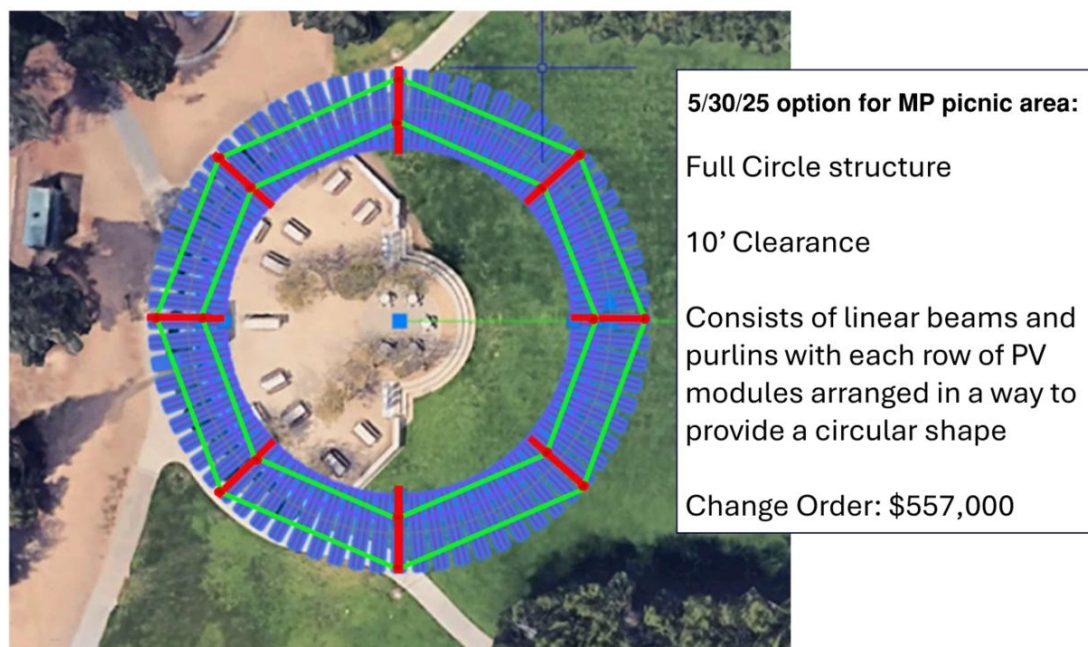


Figure 2: June 2025 option, Plan view

The City worked with SES to consider many options for the Memorial Park central picnic area (Attachment B). After an extensive process, it was determined the most economical and reasonable option was an extended carport in the Alves parking lot. This solution stays within budget, meets NEM2.0 requirements, and consolidates the panels into a single installation (see Figure 3). While the carport's footprint will increase, and additional optimization equipment will be needed to address shading from nearby trees, this approach results in a \$70,000 cost savings and minimizes disruption to Memorial Park, as construction will be confined to one area. The proposed design is currently under review and may undergo minor adjustments, but the project will move forward with this single-site installation.

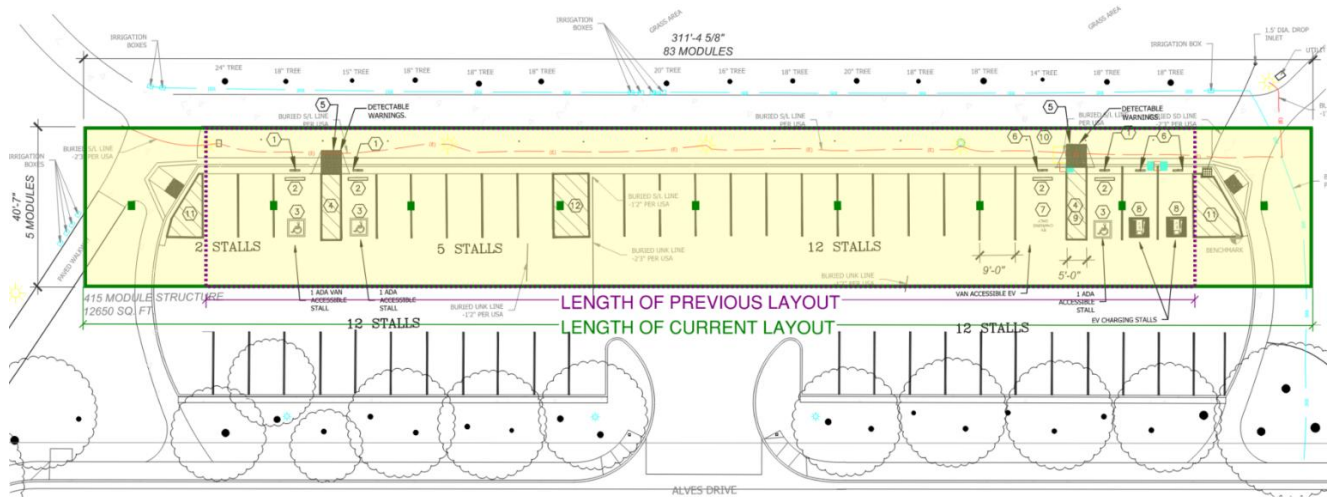


Figure 3: October 2025 construction plan

The second phase of work for this site begins in late January and will continue until mid-April 2026. Attachment A illustrates the plans for the three sites.

If there is a desire for the design to be more aesthetically appealing and blend in better with the surroundings, after project completion, staff will be able to look at opportunities to enhance the architectural appeal of the array.

Sustainability Impact

No sustainability impact. The schematic design update does not impact the previously stated climate action plan benefits.

Fiscal Impact

The project funding is not impacted. The schematic design is projected to save costs from the conceptual design.

City Work Program (CWP) Item/Description:

N/A

Council Goal:

Environmental Sustainability and Fiscal Strategy.

California Environmental Quality Act

No California Environmental Quality Act impact.

Prepared by: Susan Michael, CIP Manager

Reviewed by: Chad Mosley, Director of Public Works

Approved for Submission by: Tina Kapoor, City Manager

Attachments:

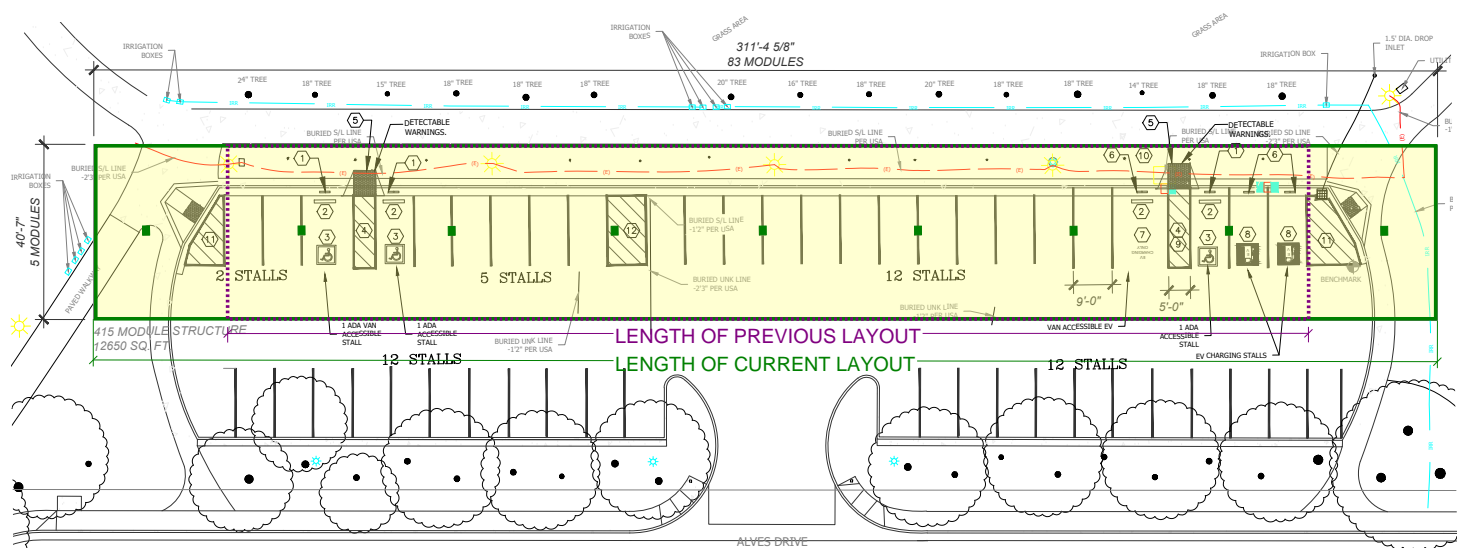
A – PV project Site plans

B – PV project Memorial Park options

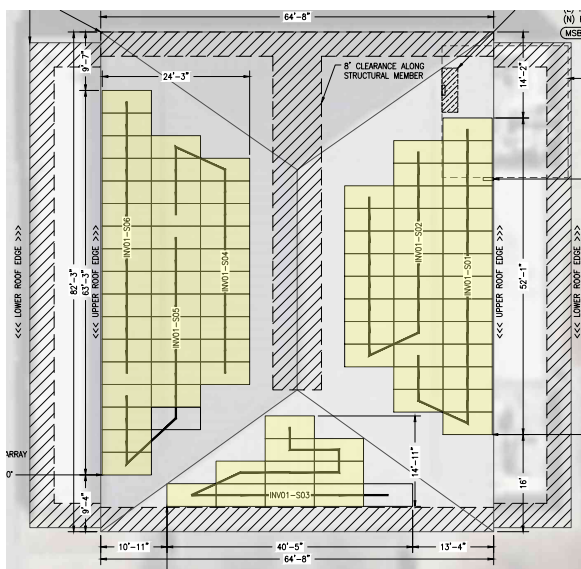
PHOTOVOLTAICS SYSTEMS DESIGN AND INSTALLATION PROJECT - SITE PLANS



CUPERTINO SPORTS CENTER: PARKING LOT



QUINLAN COMMUNITY CENTER: ALVES PARKING LOT

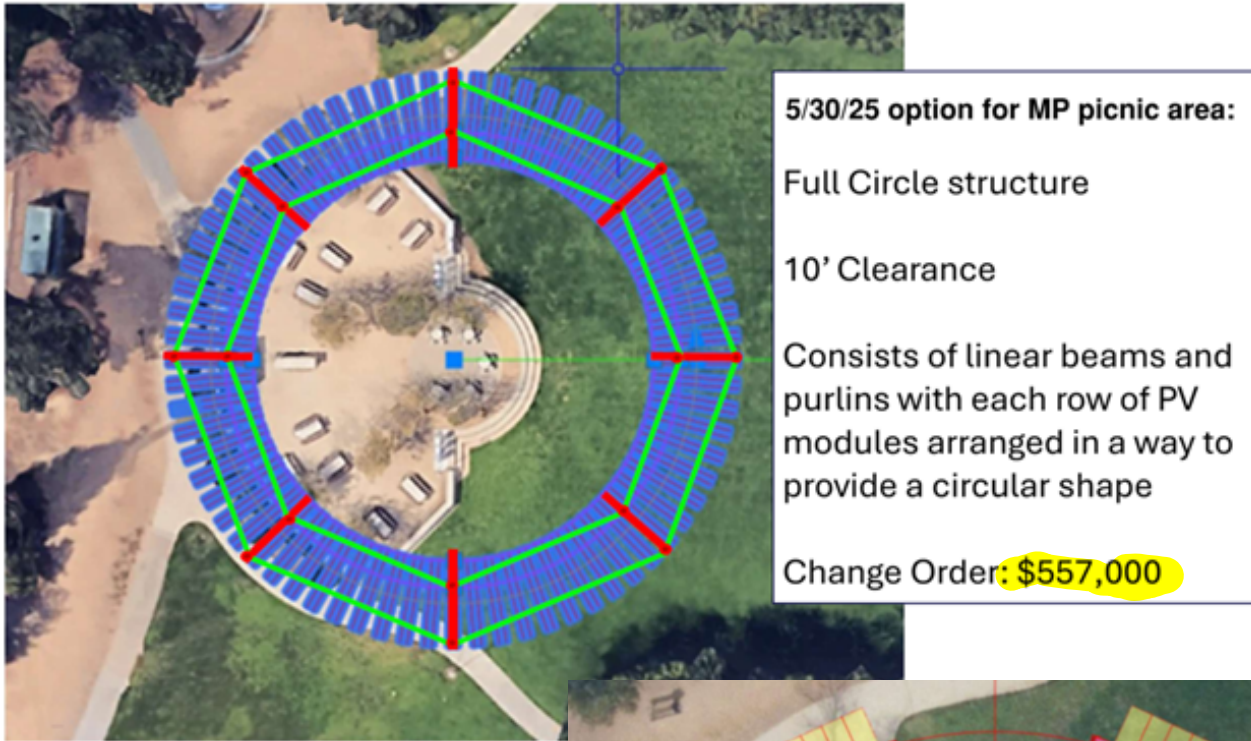


COMMUNITY HALL: ROOF PLAN

PHOTOVOLTAICS SYSTEMS DESIGN AND INSTALLATION PROJECT - MEMORIAL PARK OPTIONS

1. Memorial Park picnic area, full circle options

Total Change order: **\$557,000 to \$650,000**



Notes:

1. Pricing indicated on each option is an additional charge to the contract
2. Pricing is ROM (rough order of magnitude)

2. Memorial Park pickle ball courts. (Option was eliminated because while it will provide shade, the light quality coming through the PV modules and the gaps between them creates unplayable visibility for players; and added costs.)

Total Change order: **\$380,000**



Option 2

Flat Canopy over Pickleball Courts

20' Clearance.

Columns on edges of courts.

System size increased 12kWDC and optimizers added to compensate for tree shading losses.

Total Change Order: \$380,000

3. Quinlan front parking lot. (Option was eliminated due to negative impact to cultural events at QCC and added cost.)

Total Change order: **\$114,000**



Option 1

Tee Structures in Parking area

10' Clearance

Optimizers added to reduce tree shading losses

A few tree removal needed

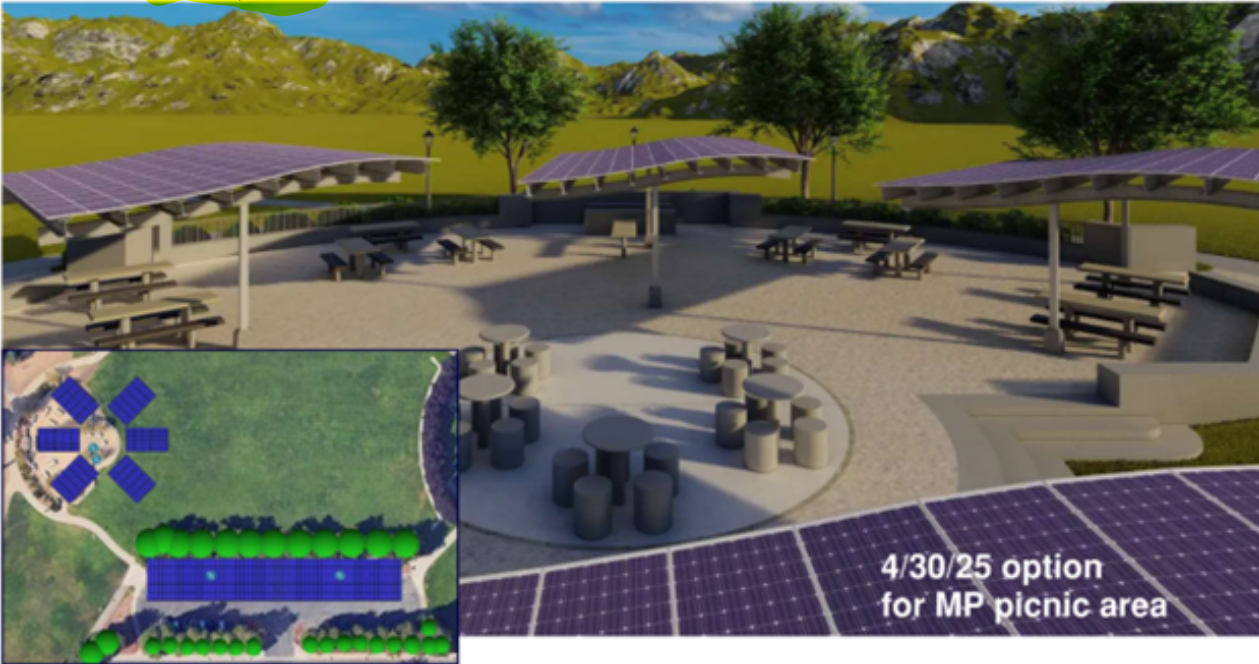
Change Order: \$114,000

Notes:

1. Pricing indicated on each option is an additional charge to the contract

2. Pricing is ROM (rough order of magnitude)

4. Six Curved Tee structures at picnic area, no wood finish. Approximately 36 PV modules each structure. \$570,000



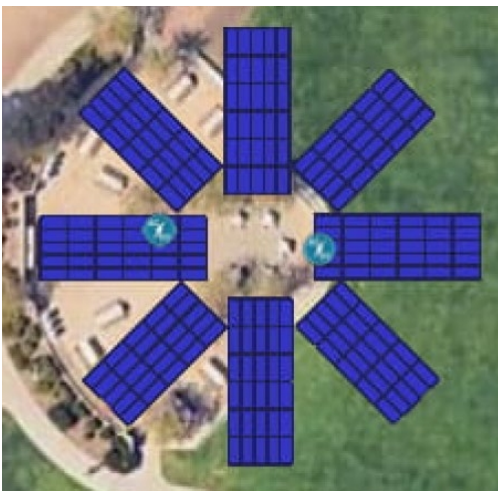
\$570,000

5. Six straight Tee structures at picnic area, no wood finish. Approximately 36 PV modules each structure.

Total Change order: \$490,00

6. Eight straight Tee structures at picnic area, no wood finish. Approximately 26 PV modules each structure.

Total Change order: \$530,000



Notes:

1. Pricing indicated on each option is an additional charge to the contract
2. Pricing is ROM (rough order of magnitude)

7. Sixteen straight Tee structures at picnic area, no wood finish. Approximately 12 PV modules each structure.

Total Change order:

\$630,000



8. Sixteen straight Tee structures at picnic area with wood finish (applied veneer or wood material structure?). Approximately 12 PV modules each structure.

Total Change order:

\$510,000



Notes:

1. Pricing indicated on each option is an additional charge to the contract
2. Pricing is ROM (rough order of magnitude)

9. Eight wood glulam structures at picnic area with wood finish (applied veneer or wood material structure?). Approximately 24-26 PV modules each structure.
Total Change order:

\$590,000



10. Alves Carport: in the current configuration (415 modules): add wood veneer finish to columns and frame.

Total Change order:

\$170,000

*This would require checking for:
Code Compliance
Capacity of current structure



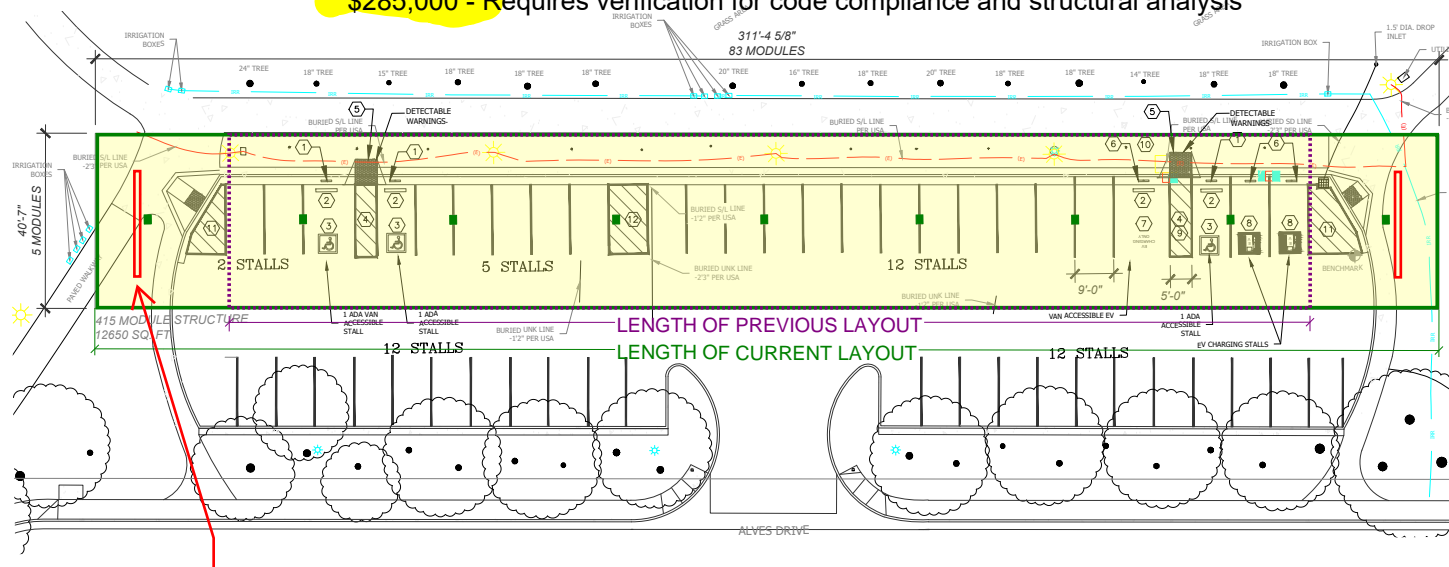
wood frame inspiration

Notes:

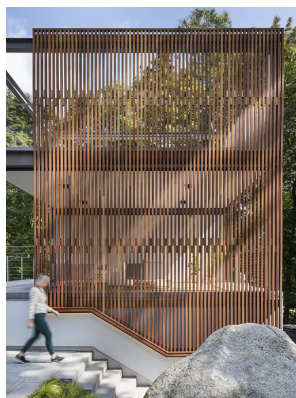
1. Pricing indicated on each option is an additional charge to the contract
2. Pricing is ROM (rough order of magnitude)

11. Alves Carport: in the current configuration (415 modules): add wood veneer finish to columns and frame, and add two wood screens.

Total Change order: **\$285,000** - Requires verification for code compliance and structural analysis



wood frame location



wood screen inspirations



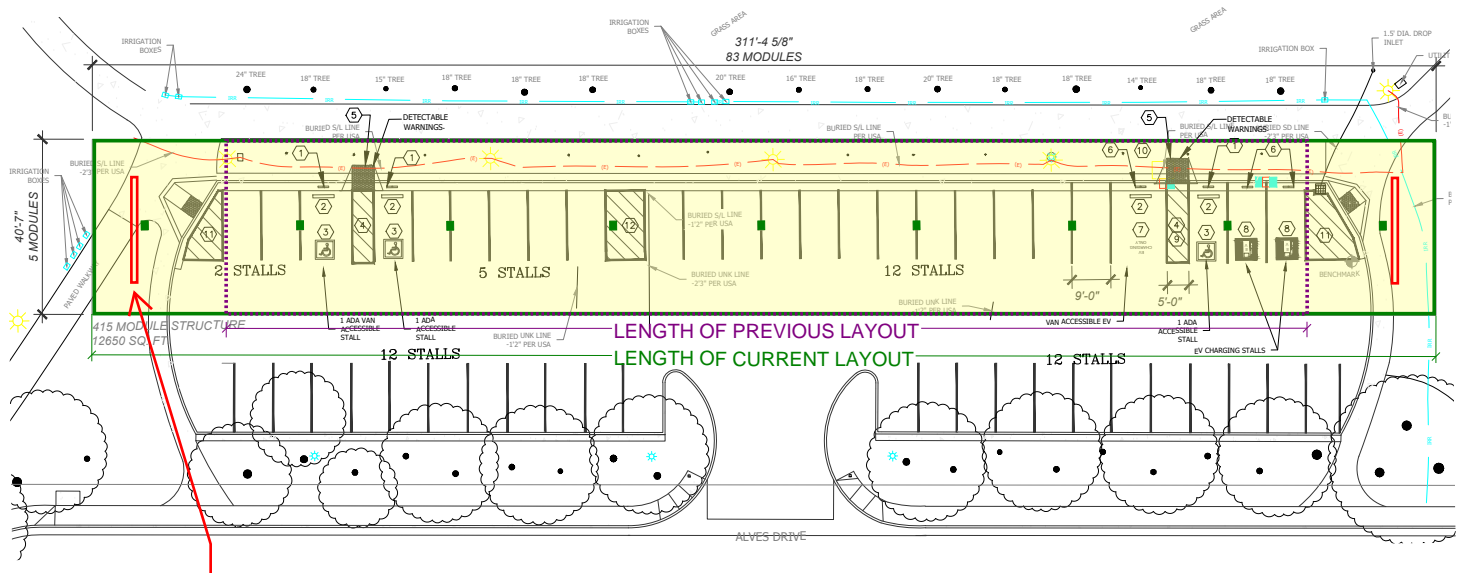
wood frame inspiration

Notes:

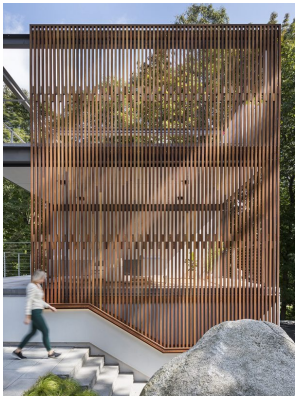
1. Pricing indicated on each option is an additional charge to the contract
2. Pricing is ROM (rough order of magnitude)

12. Alves Carport: in the current configuration (415 modules): add two steel decorative screens.

Total Change order: **\$250,000** - Requires verification for code compliance and structural analysis



steel frame location



steel screen inspirations

Notes:

1. Pricing indicated on each option is an additional charge to the contract
2. Pricing is ROM (rough order of magnitude)